

SF Medical product line

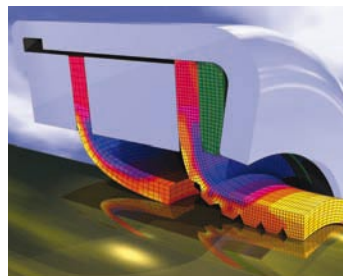


Your Partner for Sealing Technology

Serving the world's medical industry



Global manufacturing and support
Trelleborg Sealing Solutions is one of the world's leading experts in polymer sealing technology.



Extensive test facilities
FEA modeling techniques are also used in conjunction with test rigs at our fully-resourced design and application centers to prove the effectiveness of our seal, bearing and custom solutions.



Since our facility first opened in 1955, we have manufactured engineered silicone products for a variety of medical applications. We manufacture our SF Medical line of products in a controlled environment equivalent to class 100,000 conditions, with ambient temperature, humidity, and particulate count monitored regularly. This facility follows strict “Good Manufacturing Standards” as defined by the FDA and in accordance with their quality standards AS9100 ISO9001-2000. It is also registered with the FDA and undergoes regular audits by key customers to maintain approvals.

We recognize that time to market is a key component of success for our customers. To help ensure the highest quality products, our manufacturing personnel work closely with customers to deliver products specifically engineered to meet their needs with a quick turnaround time.

Adding value for our customers is important to our staff. A key differentiator for our operation is our proven design and engineering capabilities. Our innovative and experienced design team provide the proper engineered solutions for our customers.

In October 2005, SF Medical was acquired by Trelleborg Sealing Solutions, one of four business areas in the Trelleborg Group. Trelleborg is a global industrial group whose leading positions are based on advanced polymer technology and in-depth applications know-how. The Trelleborg Group has annual sales of \$3 billion, with 24,000 employees in 40 countries.

Trelleborg Sealing Solutions is a leading global supplier of high-quality polymer products for countless applications. The business area has annual sales of approximately \$660 million with 5,600 employees. Trelleborg Sealing Solutions is committed to serving the medical device and pharmaceutical industries and the SF Medical line of products find a strategic fit within the company’s existing portfolio.

The SF Medical line of products is manufactured at the facility in Hudson, Massachusetts with the level of quality and service our customers expect.



Proven solutions for medical

We offer proven capabilities in a variety of applications including catheters, dental equipment, diagnostic equipment, enteral feeding pumps, stents, sanitary fluid transfer and surgical tools and trays.



SF100HP

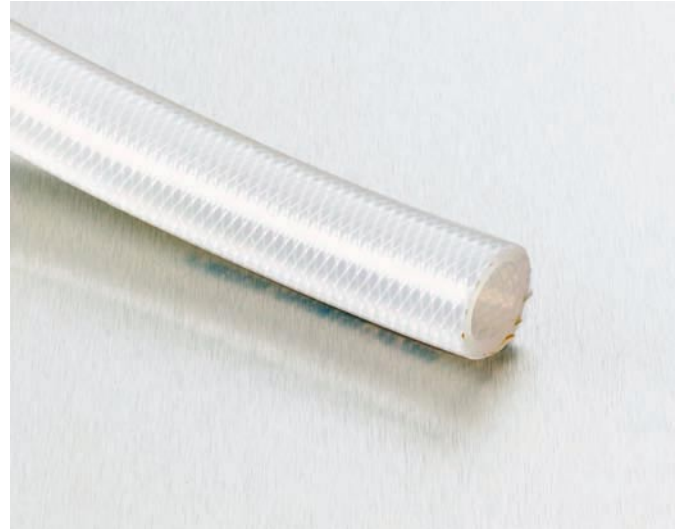
Platinum-Cured Single Ply Polyester Braid Reinforced USP Class VI Silicone Hose

Features:

- High pressure ratings
- Excellent flexibility
- Sterilizable
- Autoclavable
- Imparts no taste or odor
- Available in bulk or assemblies
- Pigmented outer covers available
- Available in 25 ft, 50 ft, and 100 ft lengths
- Temperature range: -80°F to 500°F (-62°C to 260°C)

Applications:

- Pumps
- Pharmaceutical processing
- Vessel or tank transfer
- Cell cultures
- Load cells



Approvals:

- Meets USP Class VI, FDA, and USDA requirements

Part Number	Hose ID, IN.	Recommended Working Pressure PSI at 68°F	Min Burst Pressure PSI at 68°F	Min Bend Radius, IN.	Weight Per Foot, LB.
SH1001	0.0625	175	700	1.00	C/F
SH1002	0.125	175	700	1.00	C/F
SH1003	0.187	165	650	1.25	C/F
SH1004	0.250	160	575	1.25	.080
SH1005	0.312	140	550	1.75	.100
SH1006	0.375	125	500	2.00	.116
SH1008	0.500	130	425	2.50	.150
SH1010	0.625	100	350	3.00	.220
SH1012	0.750	85	275	3.50	.260
SH1014	0.875	70	250	4.00	.305
SH1016	1.000	65	225	5.00	.342
SH1020	1.250	55	180	6.00	.374

Note: For every 100°F increase in working temperature, stated burst pressure and vacuum rating will decrease by 10%.

Note: C/F = Consult Factory

SF200HP

Platinum-Cured Double Ply Polyester Braid Reinforced USP Class VI Silicone Hose



Features:

- High pressure ratings
- Excellent flexibility
- Sterilizable
- Autoclavable
- Imparts no taste or odor
- Available in bulk or assemblies
- Pigmented outer covers available
- Available in 25 ft lengths
- Temperature range: -80°F to 500°F (-62°C to 260°C)



Applications:

- Pump applications
- Pharmaceutical processing
- Vessel or tank transfer
- Cell cultures
- Load cells

Approvals:

- Meets USP Class VI, FDA, and USDA requirements

Part Number	Hose ID, IN.	Recommended Working Pressure PSI at 68°F	Min Burst Pressure PSI at 68°F	Min Bend Radius, IN.	Weight Per Foot, LB.
SH2004	0.250	200	800	1.75	.085
SH2005	0.312	195	775	2.00	.105
SH2006	0.375	190	750	2.25	.118
SH2008	0.500	170	675	2.75	.160
SH2010	0.625	150	600	3.25	.221
SH2012	0.750	135	525	3.75	.265
SH2014	0.875	125	500	4.00	.315
SH2016	1.000	120	475	5.00	.350
SH2018	1.125	115	460	6.00	.365
SH1020	1.250	112	450	6.50	.378

Note: For every 100°F increase in working temperature, stated burst pressure and vacuum rating will decrease by 10%.

SF400HP

Platinum-Cured 4-Ply Fabric Reinforced USP Class VI Silicone Hose



Features:

- Excellent flexibility
- Sterilizable
- Autoclavable
- Imparts no taste or odor
- Available in bulk or assemblies
- Pigmented outer covers available
- Available in 10 ft lengths
- Temperature range: -80°F to 500°F (-62°C to 260°C)

Applications:

- Some vacuum pump applications
- Pharmaceutical processing
- Biotechnology
- Bulk transfer
- Load cells



Approvals:

- Meets USP Class VI, FDA, and USDA requirements

Part Number	Hose ID, IN.	Min Burst Pressure PSI at 68°F	Vacuum Rating, IN.	Min Bend Radius, IN.
SH4008	0.500	575	29	3.00
SH4012	0.750	500	25	4.00
SH4016	1.00	450	22	7.00
SH4020	1.25	425	19	10.00
SH4022	1.38	415	18	11.00
SH4024	1.50	400	17	12.00
SH4026	1.63	350	16	20.00
SH4032	2.00	300	14	30.00
SH4036	2.25	275	11	C/F
SH4040	2.50	250	9	C/F
SH4044	2.75	250	7	C/F
SH4048	3.00	250	6	C/F
SH4058	3.50	225	5	C/F
SH4064	4.00	175	4	C/F

Note: For every 100°F increase in working temperature, stated burst pressure and vacuum rating will decrease by 10%.

Note: C/F = Consult Factory

SF800HP

Platinum-Cured Polyester Monofilament Reinforced USP Class VI Silicone Hose



Features:

- Excellent flexibility
- Sterilizable
- Autoclavable
- Imparts no taste or odor
- Available in bulk or assemblies
- Pigmented outer covers available
- Available in 10 ft lengths
- Temperature range: -80°F to 500°F (-62°C to 260°C)

Applications:

- Some vacuum pump applications
- Pharmaceutical processing
- Biotechnology
- Bulk transfer
- Load cells

Approvals:

- Meets USP Class VI, FDA, and USDA requirements



Part Number	Hose ID, IN.	Min Burst Pressure PSI at 68°F	Vacuum Rating, IN.	Min Bend Radius, IN
SH8008	0.500	C/F	C/F	C/F
SH8012	0.750	600	29	1.75
SH8016	1.00	600	26	2.50
SH8020	1.25	600	26	3.25
SH8022	1.38	600	26	3.50
SH8024	1.50	600	26	4.00
SH8026	1.63	575	22	4.50
SH8028	1.75	550	20	5.00
SH8032	2.00	525	18	5.50
SH8036	2.25	525	18	5.75
SH8040	2.50	500	18	6.00
SH8044	2.75	C/F	C/F	C/F
SH8048	3.00	C/F	C/F	C/F
SH8056	3.50	C/F	C/F	C/F
SH8064	4.00	C/F	C/F	C/F

Note: For every 100°F increase in working temperature, stated burst pressure and vacuum rating will decrease by 10%.

Note: C/F = Consult Factory

SF850HP

Platinum-Cured Polyester Monofilament Reinforced USP Class VI Silicone Hose



Features:

- Excellent bend radius
- Sterilizable
- Autoclavable
- Imparts no taste or odor
- Available in bulk or assemblies
- Pigmented outer covers available
- Available in 10 ft lengths
- Temperature range: -80°F to 500°F (-62°C to 260°C)
- Convoluted OD



Applications:

- Some vacuum pump applications
- Pharmaceutical processing
- Biotechnology
- Bulk transfer
- Load cells

Approvals:

- Meets USP Class VI, FDA, and USDA requirements

Part Number	Hose ID, IN.	Min Burst Pressure PSI at 68°F	Vacuum Rating, IN.	Min Bend Radius, IN.
SH8508	0.500	C/F	C/F	C/F
SH8512	0.750	600	29	1.50
SH8516	1.00	600	26	2.25
SH8520	1.25	600	26	2.90
SH8524	1.50	600	26	3.50
SH8532	2.00	525	18	4.90
SH8540	2.50	500	18	5.30
SH8548	3.00	C/F	C/F	C/F
SH8564	4.00	C/F	C/F	C/F

Note: For every 100°F increase in working temperature, stated burst pressure and vacuum rating will decrease by 10%.

Note: C/F = Consult Factory

SF900HP

Platinum-Cured 4-Ply Fabric & SS Wire Reinforced USP Class VI Silicone Hose



Features:

- Excellent flexibility
- Sterilizable
- Autoclavable
- Imparts no taste or odor
- Available in bulk or assemblies
- Pigmented outer covers available
- Available in 10 ft lengths
- Temperature range: -80°F to 500°F (-62°C to 260°C)



Applications:

- Some vacuum pump applications
- Pharmaceutical processing
- Biotechnology
- Bulk transfer
- Load cells

Approvals:

- Meets USP Class VI, FDA, and USDA requirements

Part Number	Hose ID, IN.	Min Burst Pressure PSI at 68°F	Vacuum Rating, IN.	Min Bend Radius, IN.
SH9008	0.500	800	29.92	2.50
SH9012	0.750	800	29.92	3.50
SH9016	1.00	800	29.92	5.00
SH9020	1.25	800	29.92	6.50
SH9022	1.38	800	29.92	7.25
SH9024	1.50	800	29.92	8.00
SH9026	1.63	800	29.92	9.00
SH9028	1.75	775	29.92	10.00
SH9032	2.00	750	29.92	11.00
SH9036	2.25	725	29.92	11.00
SH9040	2.50	700	29.92	11.00
SH9044	2.75	650	29.92	13.00
SH9048	3.00	600	29.92	16.50
SH9056	3.50	550	29.92	19.00
SH9064	4.00	500	29.92	22.50

Note: For every 100°F increase in working temperature, stated burst pressure and vacuum rating will decrease by 10%.

Note: C/F = Consult Factory

SF950HP

Platinum-Cured 4-Ply Fabric & SS Wire Reinforced with a Convoluted OD USP Class VI Silicone Hose



Features:

- Excellent flexibility
- Sterilizable
- Autoclavable
- Imparts no taste or odor
- Available in bulk or assemblies
- Pigmented outer covers available
- Available in 10 foot lengths
- Temperature range: -80°F to 500°F (-62°C to 260°C)



Applications:

- Vacuum pump applications
- Pharmaceutical processing
- Biotechnology
- Bulk transfer
- Load cells

Approvals:

- Meets USP Class VI, FDA, and USDA requirements

Part Number	Hose ID, IN.	Min Burst Pressure PSI at 68°F	Vacuum Rating, IN.	Min Bend Radius, IN.
SH9508	0.500	800	29.92	2.00
SH9512	0.750	800	29.92	2.50
SH9516	1.00	800	29.92	4.50
SH9520	1.25	800	29.92	5.50
SH9524	1.50	800	29.92	6.00
SH9532	2.00	750	29.92	7.50
SH9540	2.50	700	29.92	9.50
SH9548	3.00	C/F	C/F	C/F
SH9564	4.00	C/F	C/F	C/F

*Note: For every 100°F increase in working temperature, stated burst pressure and vacuum rating will decrease by 10%.
Note: C/F = Consult Factory*

ST01 & ST02

Stainless Steel Braided Smooth-Bore PTFE Hose

Features:

- Outer cover 304 stainless steel braided
- Excellent chemical resistance
- Steam cleanable (SIP)
- Rated for continuous steam
- Detergent or caustic cleanable (CIP)
- Imparts no taste or odor
- Available in bulk or assemblies
- Pigmented outer covers available
- Non-stick, non-contaminating tube is easily cleaned
- Temperature range: -100°F to 500°F (-73°C to 260°C)

Applications:

- Vacuum and pump applications
- Pharmaceutical processing
- Biotechnology
- Chemical transfer
- Acid transfer

Approvals:

- Meets USP Class VI, FDA, 3A, and USDA requirements



Item # White	Item # Black Conductive	Hose ID, IN.	Maximum Working Pressure PSI at 72°F	Min Burst Pressure PSI at 72°F	Vacuum Rating, IN	Min Bend Radius, IN.	Weight Per Foot, LB.
ST0104	ST0204	0.250	3000	12000	29.9	3.00	0.08
ST0106	ST0206	0.375	2000	8000	29.9	5.00	0.12
ST0108	ST0208	0.500	1750	7000	29.9	6.50	0.15
ST0112	ST0212	0.750	1000	4000	29.9	8.50	0.22
ST0116	ST0216	1.00	1000	4000	29.9	12.00	0.31
ST0120	ST0220	1.25	1000	4000	20.0	14.00	0.36
ST0124	ST0224	1.50	900	3600	15.0	15.00	0.44

ST03 & ST0C 304 Stainless Steel Braided Convolute PTFE Hose

Features:

- Excellent flexibility
- Excellent chemical resistance
- Steam cleanable (SIP)
- Rated for continuous steam
- Detergent or caustic cleanable (CIP)
- Imparts no taste or odor
- Available in bulk or assemblies
- Non-stick, non-contaminating tube is easily cleaned
- Temperature range: -65°F to 450°F (-54°C to 230°C)

Applications:

- Vacuum and pump applications
- Pharmaceutical processing
- Biotechnology
- Bulk transfer
- Load cells



Approvals:

- Meets USP Class VI, FDA, and USDA requirements

Item # White	Item # Black Conductive	Hose ID, IN.	Maximum Working Pressure PSI at 72°F	Min Burst Pressure PSI at 72°F	Vacuum Rating, IN	Min Bend Radius, IN.	Weight Per Foot, LB.
ST0304	ST0C04	0.250	1500	6000	29.9	0.750	0.075
ST0306	ST0C06	0.375	1500	6000	29.9	1.00	0.140
ST0308	ST0C08	0.500	1500	6000	29.9	1.50	0.156
ST0312	ST0C12	0.750	1200	4800	29.9	2.00	0.266
ST0316	ST0C16	1.000	1000	4000	29.9	2.50	0.370
ST0320	ST0C20	1.250	750	3200	29.9	3.00	0.458
ST0324	ST0C24	1.500	650	2600	29.9	3.75	0.545
ST0332	ST0C32	2.000	450	2100	29.9	4.75	0.897

ST04 & ST0D

Blue Polypropylene Braided Convolute PTFE Hose

Features:

- Excellent flexibility
- Excellent chemical resistance
- Steam cleanable (SIP)
- Rated for continuous steam
- Detergent or caustic cleanable (CIP)
- Imparts no taste or odor
- Available in bulk or assemblies
- Non-stick, non-contaminating tube is easily cleaned
- Temperature range: -65°F to 450°F (-54°C to 230°C)

Applications:

- Vacuum and pump applications
- Pharmaceutical processing
- Biotechnology
- Bulk transfer
- Load cells



Approvals:

- Meets USP Class VI, FDA, and USDA requirements

Item # White	Item # Black Conductive	Hose ID, IN.	Maximum Working Pressure PSI at 72°F	Min Burst Pressure PSI at 72°F	Vacuum Rating, IN	Min Bend Radius, IN.	Weight Per Foot, LB.
ST0406	ST0D06	0.375	350	1400	28	1.00	0.060
ST0408	ST0D08	0.500	300	1200	28	1.50	0.148
ST0412	ST0D12	0.750	250	1000	28	2.00	0.180
ST0416	ST0D16	1.000	250	1000	28	2.50	0.262
ST0420	ST0D20	1.250	200	800	28	3.00	0.370
ST0424	ST0D24	1.500	200	800	28	3.75	0.420
ST0432	ST0D32	2.000	200	800	28	4.75	0.560

ST07 & ST0L

Rubber Covered Smooth Bore PTFE Hose

Features:

- Excellent flexibility
- Excellent chemical resistance
- Steam cleanable (SIP)
- Rated for continuous steam
- Detergent or caustic cleanable (CIP)
- Imparts no taste or odor
- Available in bulk or assemblies
- Non-stick, with white, green, blue, purple, and gray covers (STOW – White, STGR – Green, STBL – Blue, ST07 – Purple, ST08 – Gray)
- Temperature range: -40°F to 300°F (-40°C to 149°C)

Applications:

- Vacuum and pump applications
- Pharmaceutical processing
- Biotechnology
- Bulk transfer
- Load cells



Approvals:

- Meets USP Class VI, FDA, and USDA requirements

Item # White Core	Item # Black Conductive Core	Hose ID, IN.	Maximum Working Pressure PSI at 72°F	Min Burst Pressure PSI at 72°F	Vacuum Rating, IN	Min Bend Radius, IN.	Weight Per Foot, LB.
ST0708	ST0L08	0.500	500	2000	29.9	2.50	0.360
ST0712	ST0L12	0.750	500	2000	29.9	3.00	0.550
ST0716	ST0L16	1.000	400	1800	29.9	4.00	0.600
ST0720	ST0L20	1.250	375	1500	29.9	7.00	0.930
ST0724	ST0L24	1.500	375	1500	29.9	9.00	1.08
ST0732	ST0L32	2.00	300	1200	29.9	10.5	1.33
ST0740	ST0L40	2.500	200	1000	29.9	16.00	1.68
ST0748	ST0L48	3.000	200	1000	29.9	18.00	2.02
ST0764	ST0L64	4.000	150	750	29.9	22.5	2.83

FDA Food-Grade Hose

Nitrile F01

Description:

- Color: Gray cover; White tube
- Length: 100 ft. / 60 ft. continuous
- Size: 1/2" – 4"

Options:

- Assemblies – wide variety of fittings available
- Other materials available – EPDM Chlorobutyl
- Other sizes available
- Available with monofilament wire
- Private labeling

Other Food-Grade Hoses:

- F02 – Brewers, 4ply/6 ply
- F06 – XPLE Crosslink Polyethylene
- P01 – PVC, Clear, Unreinforced
- P02 – PVC, Clear, Braided
- P03 – PVC, Clear, Vacuum, Metal Wire
- P04 – PVC, Clear, Vacuum, Plastic Wire



Size ID	Tube Nitrile	Fabric	Wire	Bend Radius	Thickness	OD	Max WP	Min Burst	Weight
.5	1/16	2	1	2.50	3/64	0.94	200	800	.38
.75	1/16	2	1	3.75	3/64	1.19	200	800	.50
1.0	1/16	2	1	5.00	3/64	1.44	200	800	.64
1.5	1/16	2	1	7.50	1/16	2.02	200	800	1.05
2.0	1/16	2	1	10.00	1/16	2.62	200	800	1.72
2.5	1/16	4	1	12.50	1/16	3.10	200	800	2.15
3.0	1/16	4	1	14.00	1/16	3.74	200	800	2.90
4.0	1/16	4	1	18.00	1/16	4.78	200	800	4.16

Premium Grade Silicone Tubing

Platinum-Cured Single Lumen USP Class VI FDA Masterfile



Features & Benefits:

- Platinum cured for a high degree of purity
- Extended post cure for lowest level extractables
- Biocompatible, inert, non-reactive with other elements per systemic testing
- Odorless, tasteless, non-toxic for use in medical, food, drug, personal care, and deionized water applications
- Non-leaching plasticizers
- Sterilizable by radiation, ETO, steam – 30 psi at 253°F (123°C) for use in sterile applications, reusability
- Resists temperature extremes – flexibility retention: -65°F to 400°F (-54°C to 204°C); brittlepoint: -100°F (-73°C)
- Translucent for visual monitoring
- Color stripe, tint for custom process control identification



Biocompatibility Tests:

- Tests conducted per the standards set by the United States Pharmacopoeia National Formulary, Class VI Biological Test for Plastics, and also conducted according to Ph Eur VI.1.3.2.
- SF Medical Platinum Cured Material meets or exceeds the requirements of these protocols. Copies of the studies and raw data are on file at Trelleborg Sealing Solutions Hudson (formerly SF Medical).

Testing Sample	Results Per Standard
Hemolysis Test	0.0%
Heavy Metals as Lead	None Detected
Cell Culture Toxicity	None
Chromotropic Acid Test	Complies
Clarity of Solution	Complies
Acidity/Alkalinity	Complies
Substances Soluble in Hexane	Complies
Volatile Matter	Complies
Mineral Oils	Complies
Phenylated Compounds	Complies
Residual Peroxides	Complies
Platinum	Complies
Dichlorobenzoic Acid Residue	None Detected
HPLC analysis of IPa Extract	

Elastomer Physical Properties

	ASTM Method	Typical Values
Hardness Durometer A	D-22406	60
Tensile strength psi	D-412	1275
Elongation %	D-412675	625
Tear resistance Die B ppi	D-624	1.15
Compression set % (22 hours at 350°F)	D-395	40

Premium Grade Silicone Tubing

Platinum-Cured Single Lumen USP Class VI FDA Masterfile



- Special packaging arranged upon request
- Furnished in custom lengths, bulk, or cut to length
- Multi lumen, radiopaque, striped, color coded available
- Custom sizes and standard sizes available
- Also available in peroxide cure

Part No.	I.D.	Wall	O.D. Ref	Std. Length (Feet)	lbs/1000 ft.	Burst psi
SFM3-1050	.012+/-0.003	.007+/-0.002	0.025	50	0.23	25
SFM3-1350	.020+/-0.003	.009+/-0.002	0.037	50	0.45	25
SFM3-1550	.025+/-0.003	.011+/-0.002	0.047	50	0.74	35
SFM3-1750	.030+/-0.004	.018+/-0.002	0.065	50	1.55	45
SFM3-1850	.031+/-0.004	.063+/-0.003	0.156	50	10.9	70
SFM3-2050	.040+/-0.004	.023+/-0.003	0.085	50	2.62	45
SFM3-2350	.058+/-0.005	.009+/-0.003	0.077	50	1.2	30
SFM3-2650	.062+/-0.005	.017+/-0.003	0.095	50	2.41	40
SFM3-2850	.062+/-0.005	.032+/-0.003	0.125	50	5.49	44
SFM3-2950	.062+/-0.005	.063+/-0.003	0.188	50	14.68	65
SFM3-3050	.078+/-0.005	.024+/-0.003	0.125	50	4.45	40
SFM3-3250	.104+/-0.005	.044+/-0.003	0.192	50	12.14	43
SFM3-3650	.125+/-0.005	.063+/-0.003	0.250	50	21.85	43
SFM3-3350	.132+/-0.005	.025+/-0.003	0.183	50	7.49	30
SFM3-4050	.187+/-0.005	.063+/-0.003	0.312	50	29.07	29
SFM3-4250	.187+/-0.005	.094+/-0.004	0.375	50	49.25	43
SFM3-4450	.250+/-0.006	.063+/-0.004	0.375	50	36.42	21
SFM3-4650	.250+/-0.006	.094+/-0.004	0.437	50	59.98	31
SFM3-4850	.250+/-0.010	.125+/-0.008	0.50	50	87.4	43
SFM3-4950	.312+/-0.007	.063+/-0.005	0.437	50	43.64	17
SFM3-5050	.312+/-0.007	.094+/-0.005	0.500	50	71.16	25
SFM3-5250	.375+/-0.010	.063+/-0.007	0.500	50	50.98	14
SFM3-5450	.375+/-0.010	.094+/-0.007	0.562	50	81.67	20
SFM3-5650	.375+/-0.010	.125+/-0.010	0.625	50	116.53	29
SFM3-6050	.500+/-0.010	.063+/-0.007	0.625	25	65.55	11
SFM3-6250	.500+/-0.015	.094+/-0.007	0.687	25	103.46	16
SFM3-6450	.500+/-0.015	.125+/-0.010	0.750	25	145.66	22
SFM3-6850	.625+/-0.025	.125+/-0.015	0.875	25	174.79	18
SFM3-7050	.750+/-0.025	.125+/-0.015	1.000	25	203.93	15

PharmElast™ Silicone Sheeting

USP Class VI

PharmElast™ Sheeting is a translucent or radiopaque silicone elastomer material designed for applications demanding the ultimate compatibility in healthcare and other biologically related applications. PharmElast™ Sheeting is available as a solid silicone sheet or with a polyester tricot reinforcement.

Features:

- Made from USP Class VI Platinum cured high tear strength silicone
- Polyester reinforced sheet minimizes stretch
- Easily cut to desired shape
- Highly permeable to gases
- Will not adhere readily to biologically active surfaces
- Autoclavable without changes in consistency, softness, or other inherent properties
- Excellent biocompatibility as evidenced by its Class VI clearance
- Biologically active fluids have little or no effect on the sheeting
- May be bonded to itself or synthetics (Polyester Tricot) with biologically compatible adhesives



PharmaLim®

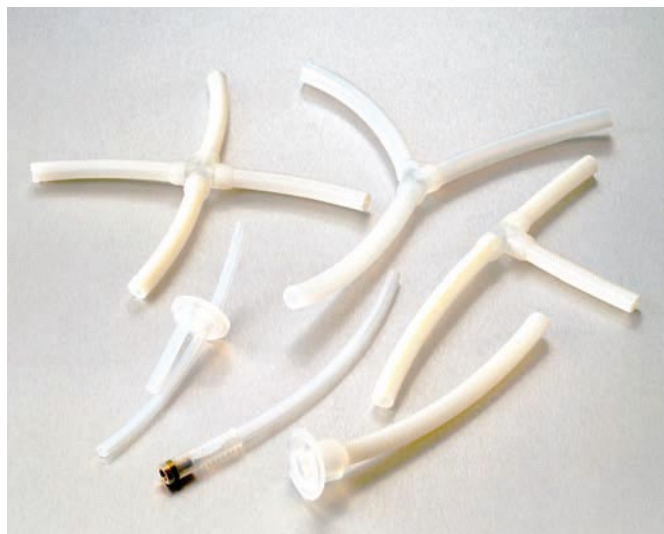
PharmaLim® is a liquid injection molded medical grade silicone product line manufactured in the Trelleborg Sealing Solutions Hudson (formerly SF Medical) FDA-registered facility.

Features:

- Variety of sizes integral/reusable
- Saves time and money
- Provides greater reliability

PharmaLim® Types:

- The PharmaLim® product line includes “Ys” “Ts” and “Crosses”.
- The product line also features 90° elbows in any configuration and size up to a 1/2” ID
- PharmaLim® products also include the molded Tri-clamp ends, bottle stopper with or without tubing, and custom manifolds



How to Order



HOSE TYPE	
PHARMASIL® Platinum Cured	
H00	Pharmatube Unreinforced Tubing
H10	SF-100-HP, 1 Braid
H20	SF-200-HP, 2 Braid
H40	SF-400-HP, 4 Ply
H50	SF-500-HP, 4 Ply Hastaloy® Wire
H80	SF-800-HP, 4 Ply Monofilament Wire
H90	SF-900-HP, 4 Ply Stainless Wire
H95	SF-950-HP, 4 Ply Stainless Wire Convoluted
NEUTRASIL® Peroxide Cured	
C10	CW-100, 1 Braid
C20	CW-200, 2 Braid
C40	CW-400, 4 Ply
C50	CW-500, 4 Ply Hastaloy® Wire
C80	CW-800, 4 Ply Monofilament Wire
C90	CW-900, 4 Ply Stainless Wire
PTFE SMOOTH BORE	
T01	PTFE, Smooth, White, 1 SS Braid
T02	PTFE, Smooth, Black, 1 SS Braid
T0A	PTFE, Smooth, White, 2 SS Braids
T0B	PTFE, Smooth, Black, 2 SS Braids
PTFE CONVOLUTED	
T00	Convoluted, White, No Braid
T0P	Convoluted, White, w/wire only
T03	Convoluted, White, 1 SS Braid
T04	Convoluted, White, Polypro Braid
T05	Vacuum, Convoluted, White, SS Braid
T06	Vacuum, Convoluted, White, Polypro Braid
T0C	Convoluted, Black, 1 SS Braid
T0D	Convoluted, Black, Polypro Braid
T0G	Vacuum, Convoluted, Black, SS Braid
T0H	Vacuum, Convoluted, Black, Polypro Braid
PTFE RUBBER COVERED	
T0W	White Rubber, White
T07	Purple Rubber, White
T08	Gray Rubber, White
T0L	Purple Rubber, Black
T0M	Gray Rubber, Black
FOOD-GRADE RUBBER	
F01	Rubber, Food Grade with Wire
F02	Rubber, Brewers Hose, MultiPly
F03	Rubber, Industrial Grade
F06	Rubber, XLPE Chemical
PVC FOOD & BEVERAGE	
P01	PVC, Un-reinforced
P02	PVC, Reinforced Braid
P03	PVC, Vacuum, Wire, Metal
P04	PVC, Vacuum, Wire, Plastic
Consult factory if required hose type is not listed	

HOSE I.D.		
#	Size (in.)	Size (in.)
02	.125	1/8
03	.187	3/16
04	.250	1/4
05	.312	5/16
06	.375	3/8
08	.500	1/2
10	.625	5/8
12	.750	3/4
14	.875	7/8
16	1.000	1
18	1.125	1-1/8
20	1.250	1-1/4
24	1.500	1-1/2
32	2.000	2
40	2.500	2-1/2
48	3.000	3
64	4.000	4

OPTIONS – other I.D.s available, consult factory

LENGTH	
Imperial	
Size is displayed in 1/10s of an inch.	
Inches + 1 decimal	
Example:	12-1/2" = 0125
Metric	
Convert to feet, then to inches	
1 meter = 3.28 feet	
1 foot = 12 inches	
Example:	10m = 30.3 ft
	30.3 ft = 3636 in (30.3 x 12)

FITTINGS	
L.I.M. MOLDED ENDS	
Liquid Injection Silicone	
SC	Molded, Silicone and Gasket
SF	Molded, Silicone, Female
SG	Molded, Silicone, Mini/Gasket
SH	Molded, Mini Female
SK	Molded, Elbow
ST	Molded, Tee
SY	Molded, Wye
SP	Pharma-Seal™, Anti-wick
SZ	Molded, Special

FITTINGS	
CRIMPED AND REUSABLE	
Code	Description
MINI-SANITARY	
S1	Sanitary, Mini
SM	Sanitary, Mini Set Up
SE	90° Mini Elbow
S\$	45° Mini Elbow
TRI-CLAMP SANITARY	
S0	Sanitary
SA	Sanitary, Step Up 1x
SB	Sanitary, Step Up 2x
S3	Sanitary, Hose Splicer
SL	90° Elbow
SV	45° Elbow
S5	Bevel Seat, Female
S6	Bevel Seat, Male
S8	I-Line™, Male
S9	I-Line™, Female
T1	Tube, Butt Weld
REUSABLE FITTINGS*	
SR	Sanitary, Mini
SU	Tri-Clamp, Sanitary Reusable
PIPE FITTINGS	
P1	Pipe, Butt Weld
P2	JIC Female, Swivel
P3	Pipe NPT Hex, Male
P6	Pipe NPT Hex, Female
P7	Union, Female
P8	Union, Male
P9	NPSH, Female
F2	Flange Retainer, 150#
F3	Flare-Seal, Flange Retainer
OTHERS	
K2	Flange Adapter
K6	Locking Handle, Female
K7	Locking Handle, Male
KS	Spool Adapter
C1	Tube Compression
C2	Tube Adapter
D1	DIN, Female
D2	DIN, Male
V1	Vacuum-cring Seal
V2	Vacuum, Male
V3	Vacuum, Female
FITTING OPTIONS	
<ul style="list-style-type: none"> • Elbows • Flange Specials • Step-Up • Step-Down • Concentric Reducers • Eccentric Reducers • Others – Consult Factory 	
* Reusable fittings available with other ends besides Sanitary, consult factory.	

MATERIALS	
Code	Description
4	304 Stainless
6	316 Stainless
7	316 Stainless EP
B	Brass
C	Carbon Steel
D	PTFE Encap
E	Epoxy ctd. Steel
F	Polysulphone
H	Hastaloy®
K	PVDF (Kynar)
M	Monel™
P	Polypropylene
R	Delrin®
S	Silicone
T	PTFE Solid
Consult factory if required material is not listed	

ACCESSORIES	
Code	Description
O	None
A	Armor Guard
B	I.D. Specification
C	Clear Silicone
E	EPDM Jacket
F	Fire Sleeve
H	Hypalon™
L	Close Tolerance
M	Special Marking
N	Tag Assembly
P	Polyolefin Heat Shrink
R	Restrictor, End Bend
S	Spring Guard
T	FEP Heat Shrink
V	Vacuum, Spring Wire
Z	Custom
*	Consult Factory for Specials

Assembly Length Tolerance	
06" – 24"	Plus/minus 1/2"
25" – 60"	Plus/minus 1/2"
Over 60"	Plus/minus 1% of overall length

SlFit, PharmaSil, and NeutraSil are registered trademarks of Trelleborg Sealing Solutions. PharmaSeal is a trademark of Trelleborg Sealing Solutions. Hastaloy is a registered trademark of Haynes International. Monel is a trademark of Inco Alloys International. I-Line is a trademark of Cherry-Burrell.

Contact your local marketing company for further information:

Europe

AUSTRIA - Vienna
(ALBANIA, BOSNIA AND HERZEGOVINA,
MACEDONIA, SERBIA AND MONTENEGRO, SLOVENIA)

+43 (0) 1 406 47 33

BELGIUM - Dion-Valmont
(LUXEMBOURG)

+32 (0) 10 22 57 50

BULGARIA - Sofia
(ROMANIA)

+359 (0)2 969 95 99

CROATIA - Zagreb

+385 (0) 1 24 56 387

CZECH REPUBLIC - Rakovník
(SLOVAKIA)

+420 313 529 111

DENMARK - Hillerød

+45 48 22 80 80

FINLAND - Vantaa
(ESTONIA, LATVIA)

+358 (0) 207 12 13 50

FRANCE - Maisons-Laffitte

+33 (0) 1 30 86 56 00

GERMANY - Stuttgart

+49 (0) 711 7864 0

GREECE

+41 (0) 21 631 41 11

HUNGARY - Budaörs

+36 (06) 23 50 21 21

ITALY - Livorno

+39 0586 22 6111

THE NETHERLANDS - Barendrecht

+31 (0) 10 29 22 111

NORWAY - Oslo

+47 22 64 60 80

POLAND - Warsaw
(LITHUANIA, UKRAINE, BELARUS)

+48 (0) 22 863 30 11

RUSSIA - Moscow

+7 495 982 39 21

SPAIN - Madrid
(PORTUGAL)

+34 (0) 91 71057 30

SWEDEN - Jönköping

+46 (0) 36 34 15 00

SWITZERLAND - Crissier

+41 (0) 21 631 41 11

TURKEY

+41 (0) 21 631 41 11

UNITED KINGDOM - Solihull
(EIRE)

+44 (0) 121 744 1221

AFRICA REGIONAL

+41 (0) 21 631 41 11

MIDDLE EAST REGIONAL

+41 (0) 21 631 41 11

Americas

AMERICAS - REGIONAL

+1 260 749 9631

BRAZIL - São Paulo

+55 11 3372 4500

CANADA - Etobicoke, ON

+1 416 213 9444

MEXICO - Mexico City

+52 55 57 19 50 05

USA, East - Conshohocken, PA

+1 610 828 3209

USA, Great Lakes - Fort Wayne, IN

+1 260 482 4050

USA, Midwest - Lombard, IL

+1 630 268 9915

USA, Mountain - Broomfield, CO

+1 303 469 1357

USA, Northern California - Fresno, CA

+1 559 449 6070

USA, Northwest - Portland, OR

+1 503 595 6565

USA, South - N. Charleston, SC

+1 843 747 7656

USA, Southwest - Houston, TX

+1 713 461 3495

USA, West - Torrance, CA

+1 310 371 1025

Asia Pacific

Telephone

ASIA PACIFIC REGIONAL

+65 6 577 1778

CHINA - Hong Kong

+852 2366 9165

CHINA - Shanghai

+86 (0) 21 6145 1830

INDIA - Bangalore

+91 (0) 80 2245 5157

JAPAN - Tokyo

+81 (0) 3 5633 8008

KOREA - Anyang

+82 (0) 31 386 3283

MALAYSIA - Kuala Lumpur

+60 (0) 3 9059 6388

TAIWAN - Taichung

+886 4 2382 8886

THAILAND - Bangkok

+66 (0) 2732-2861

SINGAPORE

+65 6 577 1778

and all other countries in Asia

www.tss.trelleborg.com

