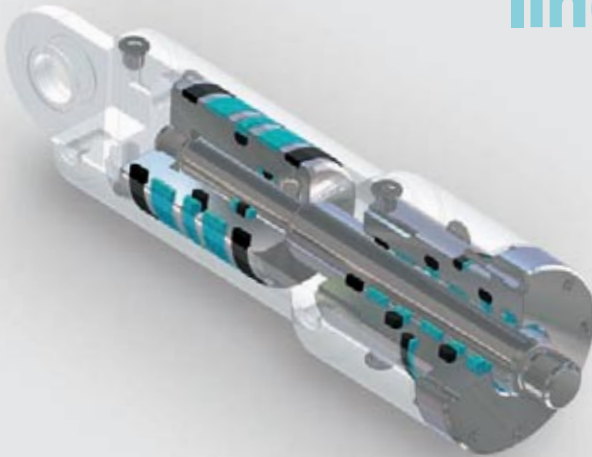


Hydraulic seals – linear



Inch Version

DUALSEAL



Your Partner for Sealing Technology



Your Partner for Sealing Technology

Trelleborg Sealing Solutions is a major international sealing force, uniquely placed to offer dedicated design and development from our market-leading product and material portfolio: a one-stop shop providing the best in elastomer, thermoplastic, PTFE and composite technologies for applications in aerospace, industrial and automotive industries.

With 50 years experience, Trelleborg Sealing Solutions engineers support customers with design, prototyping, production, test and installation using state-of-the-art design tools. An international network of over 70 facilities worldwide includes 30 manufacturing sites and strategically positioned research and development centers, including materials and development laboratories and locations specializing in design and applications.

Developing and formulating materials in-house, we utilize the resource of our material database, including over 2,000 proprietary compounds and a range of unique products.

Trelleborg Sealing Solutions fulfills challenging service requirements, supplying standard parts in volume or a single custom-manufactured component, through our integrated logistical support, which effectively delivers over 40,000 sealing products to customers worldwide.

Facilities are certified to ISO 9001:2000 and ISO/TS 16949:2002, with many manufacturing sites also working to QS9000 and VDA 6.1. Trelleborg Sealing Solutions is backed by the experiences and resources of one of the world's foremost experts in polymer technology: Trelleborg AB.

ISO 9001:2000

ISO/TS 16949:2002

ISO 9000

ISO 14001

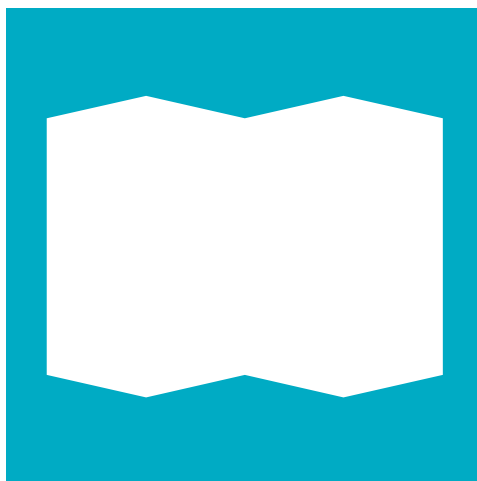
The information in this brochure is intended to be for general reference purposes only and is not intended to be a specific recommendation for any individual application. The application limits for pressure, temperature, speed and media given are maximum values determined in laboratory conditions. In application, due to the interaction of operating parameters, maximum values may not be achieved. It is vital therefore, that customers satisfy themselves as to the suitability of product and material for each of their individual applications. Any reliance on information is therefore at the user's own risk. In no event will Trelleborg Sealing Solutions be liable for any loss, damage, claim or expense directly or indirectly arising or resulting from the use of any information provided in this brochure. While every effort is made to ensure the accuracy of information contained herewith, Trelleborg Sealing Solutions cannot warrant the accuracy or completeness of information.

To obtain the best recommendation for a specific application, please contact your local Trelleborg Sealing Solutions marketing company.

This edition supersedes all previous brochures.
This brochure or any part of it may not be reproduced without permission.

© All trademarks are the property of Trelleborg AB.
The turquoise color is a registered trademark of Trelleborg AB.
© 2007, Trelleborg AB. All rights reserved.

DUALSEAL



- Radial sealing -
- For O-Ring grooves -
- Material Zurcon[®] -





■ Description

In current hydraulic cylinder design, O-Ring or O-Ring/Back-up Ring combinations are mainly used as static seals. However, this sealing solution hides the risk that during assembly the O-Ring may become twisted and that the position of the Back-up Ring is not optimal. This solution also exhibits weaknesses with regard to pressure pulsation and the ingress of dirt.

The Dualseal as a single component static hydraulic seal offers a good alternative in such cases.

Advantages

Compared with the O-Ring / Back-up Ring combination, the Dualseal offers the following advantages:

- High resistance to twisting
- Easy assembly
- Long service life
- High extrusion resistance

Table 1 Surface finish

Type of load	Surface	Rt μm	Rz μm	Ra μm
Radial-static	Mating surface Groove surface (groove diameter, groove flanks)	≤ 10.0 ≤ 16.0	≤ 6.3	≤ 1.6 ≤ 3.2

Lead-in chamfers

Groove depth $< .12$ inches (3 mm) \Rightarrow .12 inches x 15° (3 mm x 15°)

Groove depth $> .12$ inches (3 mm) \Rightarrow .20 inches x 15° (5 mm x 15°)

Preferred sealing gap

Bore H8

Gland g6

Due to the high extrusion resistance of the seal a radial sealing gap (S) of .008 inches (0.2 mm) can be realised.

In case of low temperature applications deviations of the gland to the bore and rod should be avoided.

Technical data

Operating pressure: Max. 7,500 psi (Max. 50 MPa)

Operating temperature: -31 °F to +230 °F
(-35 °C to +110 °C)

Important Note:

The application limits for pressure and temperature given in this catalogue are maximum values. During practical applications it should be remembered that due to the interaction of operating parameters the maximum values must be set correspondingly lower.

Applications

The Dualseal allows general use in hydraulic cylinders:

- Fork lifts
- Mobile hydraulics
- Industrial hydraulics
- Machine tools
- Injection molding machines
- Hydraulic presses
- Cartridge valves

Dualeal performs leak-free and is highly extrusion resistant under the following test conditions:

	High pressure test	Pressure pulsation test
Pressure p	6,000/7,800 psi (40/52 MPa)	4,500 psi (30 MPa)
Temperature T	212°F / 176°F (100°C / 80°C)	140°F (60°C (max. tank temperature))
Medium	Hydraulic oil HLP 46	Hydraulic oil HLP 46
Test duration	72 h	500,000 Pressure pulsations

Material

Standard material: Zurcon® Z20 polyurethane 93 shore A, turquoise. Suitable for all HL and HLP hydraulic fluids.



■ Installation Recommendation (Inch Series)

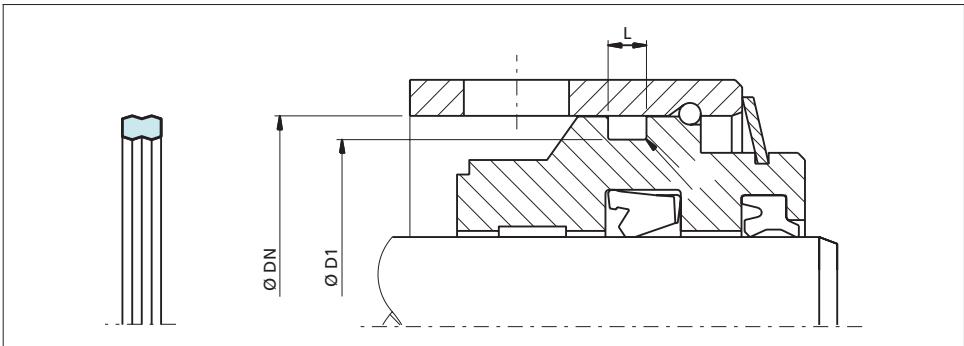


Figure 1 Installation drawing

Table II Installation dimensions / TSS Part No.

ASTM A5568 Size	Bore Diam.	Groove Diam.	Groove Width	TSS Part No.
	DN H9	D1 h9	L +0.2	
117	1.000	.838	.140	DUB001000-Z20
121	1.250	1.088	.140	DUB001250-Z20
125	1.500	1.338	.140	DUB001500-Z20
129	1.750	1.588	.140	DUB001750-Z20
133	2.000	1.838	.140	DUB002000-Z20
137	2.250	2.088	.140	DUB002250-Z20
141	2.500	2.338	.140	DUB002500-Z20
232	3.000	2.778	.187	DUC003000-Z20
234	3.250	3.028	.187	DUC003250-Z20
236	3.500	3.278	.187	DUC003500-Z20
238	3.750	3.528	.187	DUC003750-Z20
240	4.000	3.778	.187	DUC004000-Z20
242	4.250	4.028	.187	DUC004250-Z20
244	4.500	4.278	.187	DUC004500-Z20
246	4.750	4.528	.187	DUC004750-Z20
248	5.000	4.778	.187	DUC005000-Z20
250	5.250	5.028	.187	DUC005250-Z20
354	5.500	5.160	.281	DUD005500-Z20
358	6.000	5.660	.281	DUD006000-Z20
117	1.000	.838	.171	DUB101000-Z20
121	1.250	1.088	.171	DUB101250-Z20

The sizes listed in bold font are preferred sizes (more likely to be available for immediate shipment).



ASTM AS568 Size	Bore Diam.	Groove Diam.	Groove Width	TSS Part No.
	DN H9	D1 h9	L +0.2	
125	1.500	1.338	.171	DUB101500-Z20
129	1.750	1.588	.171	DUB101750-Z20
133	2.000	1.838	.171	DUB102000-Z20
137	2.250	2.088	.171	DUB102250-Z20
141	2.500	2.338	.171	DUB102500-Z20
232	3.000	2.778	.208	DUC103000-Z20
234	3.250	3.028	.208	DUC103250-Z20
236	3.500	3.278	.208	DUC103500-Z20
238	3.750	3.528	.208	DUC103750-Z20
240	4.000	3.778	.208	DUC104000-Z20
242	4.250	4.028	.208	DUC104250-Z20
246	4.750	4.528	.208	DUC104500-Z20
248	5.000	4.778	.208	DUC104750-Z20
250	5.250	5.028	.208	DUC105000-Z20
250	5.250	5.028	.208	DUC105250-Z20
354	5.500	5.160	.311	DUC105500-Z20
358	6.000	5.660	.311	DUD106000-Z20

The sizes listed in bold font are preferred sizes (more likely to be available for immediate shipment).

Contact your local marketing company for further information:

Europe	Telephone	Americas	Telephone
AUSTRIA - Vienna (ALBANIA, BOSNIA AND HERZEGOVINA, MACEDONIA, SERBIA AND MONTENEGRO, SLOVENIA)	+43 (0) 1 406 47 33	AMERICAS - REGIONAL	+1 260 749 9631
BELGIUM - Dion-Valmont (LUXEMBOURG)	+32 (0) 10 22 57 50	BRAZIL - São Paulo	+55 11 3372 4500
BULGARIA - Sofia (ROMANIA)	+359 (0)2 969 95 99	CANADA - Etobicoke, ON	+1 416 213 9444
CROATIA - Zagreb	+385 (0) 1 24 56 387	MEXICO - Mexico City	+52 55 57 19 50 05
CZECH REPUBLIC - Rakovník (SLOVAKIA)	+420 313 529 111	USA, East - Conshohocken, PA	+1 610 828 3209
DENMARK - Hillerød	+45 48 22 80 80	USA, Great Lakes - Fort Wayne, IN	+1 260 482 4050
FINLAND - Vantaa (ESTONIA, LATVIA)	+358 (0) 207 12 13 50	USA, Midwest - Lombard, IL	+1 630 268 9915
FRANCE - Maisons-Laffitte	+33 (0) 1 30 86 56 00	USA, Mountain - Broomfield, CO	+1 303 469 1357
GERMANY - Stuttgart	+49 (0) 711 7864 0	USA, Northern California - Fresno, CA	+1 559 449 6070
GREECE	+41 (0) 21 631 41 11	USA, Northwest - Portland, OR	+1 503 595 6565
HUNGARY - Budaörs	+36 (06) 23 50 21 21	USA, South - N. Charleston, SC	+1 843 747 7656
ITALY - Livorno	+39 0586 22 6111	USA, Southwest - Houston, TX	+1 713 461 3495
THE NETHERLANDS - Barendrecht	+31 (0) 10 29 22 111	USA, West - Torrance, CA	+1 310 371 1025
NORWAY - Oslo	+47 22 64 60 80	Asia Pacific	Telephone
POLAND - Warsaw (LITHUANIA, UKRAINE, BELARUS)	+48 (0) 22 863 30 11	ASIA PACIFIC REGIONAL	+65 6 577 1778
RUSSIA - Moscow	+7 495 982 39 21	CHINA - Hong Kong	+852 2366 9165
SPAIN - Madrid (PORTUGAL)	+34 (0) 91 71057 30	CHINA - Shanghai	+86 (0) 21 6145 1830
SWEDEN - Jönköping	+46 (0) 36 34 15 00	INDIA - Bangalore	+91 (0) 80 2245 5157
SWITZERLAND - Crissier	+41 (0) 21 631 41 11	JAPAN - Tokyo	+81 (0) 3 5633 8008
TURKEY	+41 (0) 21 631 41 11	KOREA - Anyang	+82 (0) 31 386 3283
UNITED KINGDOM - Solihull (EIRE)	+44 (0) 121 744 1221	MALAYSIA - Kuala Lumpur	+60 (0) 3 9059 6388
AFRICA REGIONAL	+41 (0) 21 631 41 11	TAIWAN - Taichung	+886 4 2382 8886
MIDDLE EAST REGIONAL	+41 (0) 21 631 41 11	THAILAND - Bangkok	+66 (0) 2732-2861
		SINGAPORE	+65 6 577 1778
		and all other countries in Asia	

www.tss.trelleborg.com